

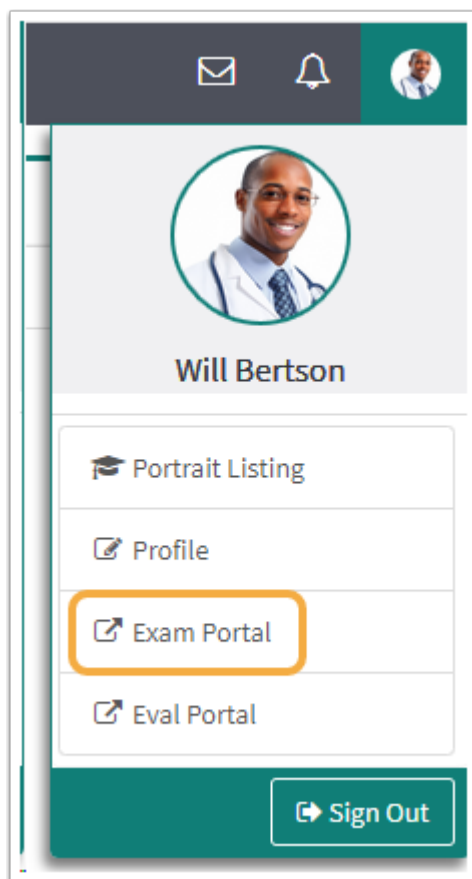


OwlMed: Exam Directions for Students

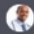
Samantha Starr - 2024-06-14 - *M1 Student Materials*

Student Directions for Taking an Exam in OwlMed

- 1) Log into **OwlMed**
- 2) Select your **Academic Portrait** (picture icon)



- 3) Select **Exam Portal**
- 4) Click the **Exam name** under the column "Linked to"

Leo: Exam Portal 

Exams To Be Completed

Show entries Search:

Line#	Linked to	Exam Name	From Time	To Time
1	CARDIOMED - CV EXAM 1	Block Exam X	All day	All day

Showing 1 to 1 of 1 entries

Previous **1** Next

- 5) Start the Exam (see below for navigation tools)
- 6) Select **Submit Exam** when you're finished

When you use the submit option, you are indicating that you have completed the exam.

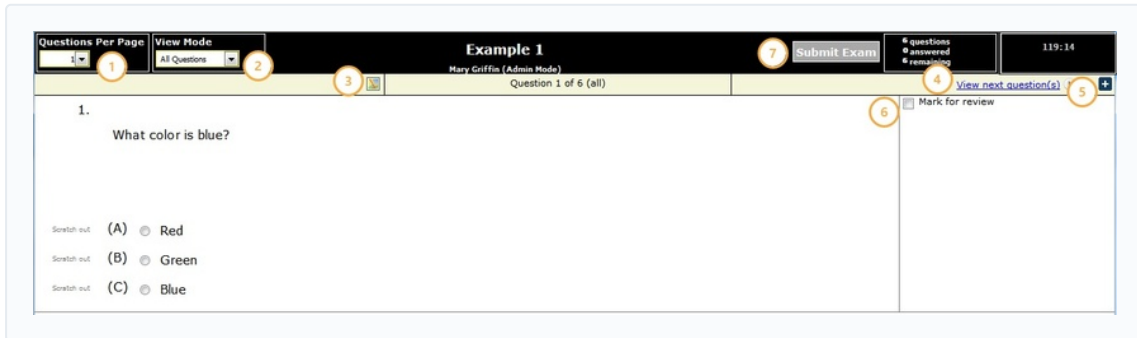
If this is **not** what you want to do, then click the *Cancel* option

If you need to close the exam screen, but not submit the exam, then simply close the window. However, some exams are set to limit the number of times this can be done.

Click to cancel

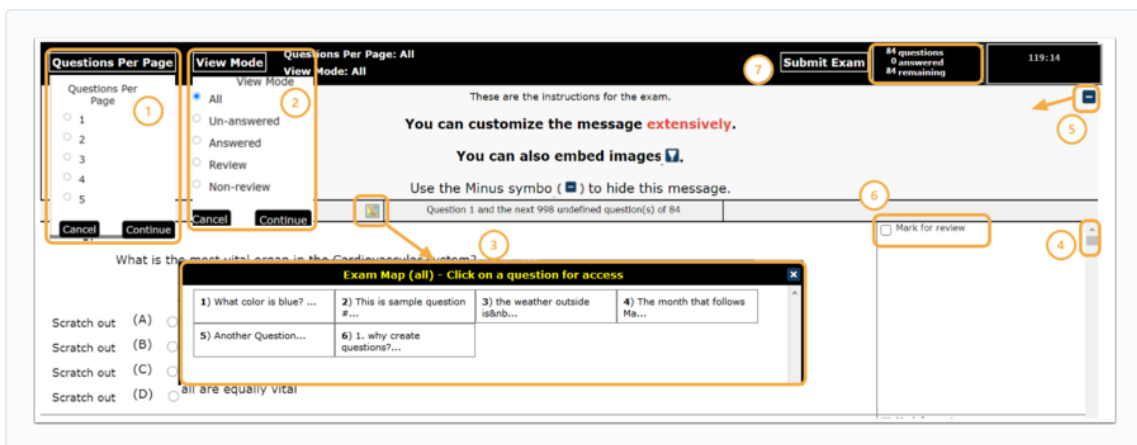
Click to submit exam

Exam Screen



Exam Navigational Tools

1. Questions per page: Select the number of questions on a page at one time.
2. View Mode: Select types of questions to review
3. Exam Map: Gives an thumbnail overview of the exam, which is useful to go directly to a question.
4. View next question: Advance to next question if you are using the one question per page mode, or use the scroll bar to navigate to the next question.
5. Onscreen Help: Expand the + to view the onscreen help.
6. Mark for review: Check for review any questions that you wish to return to prior to submitting exam.
7. Submit: Click to submit exam for grading.



Tags

exam

exams

OwlMed