



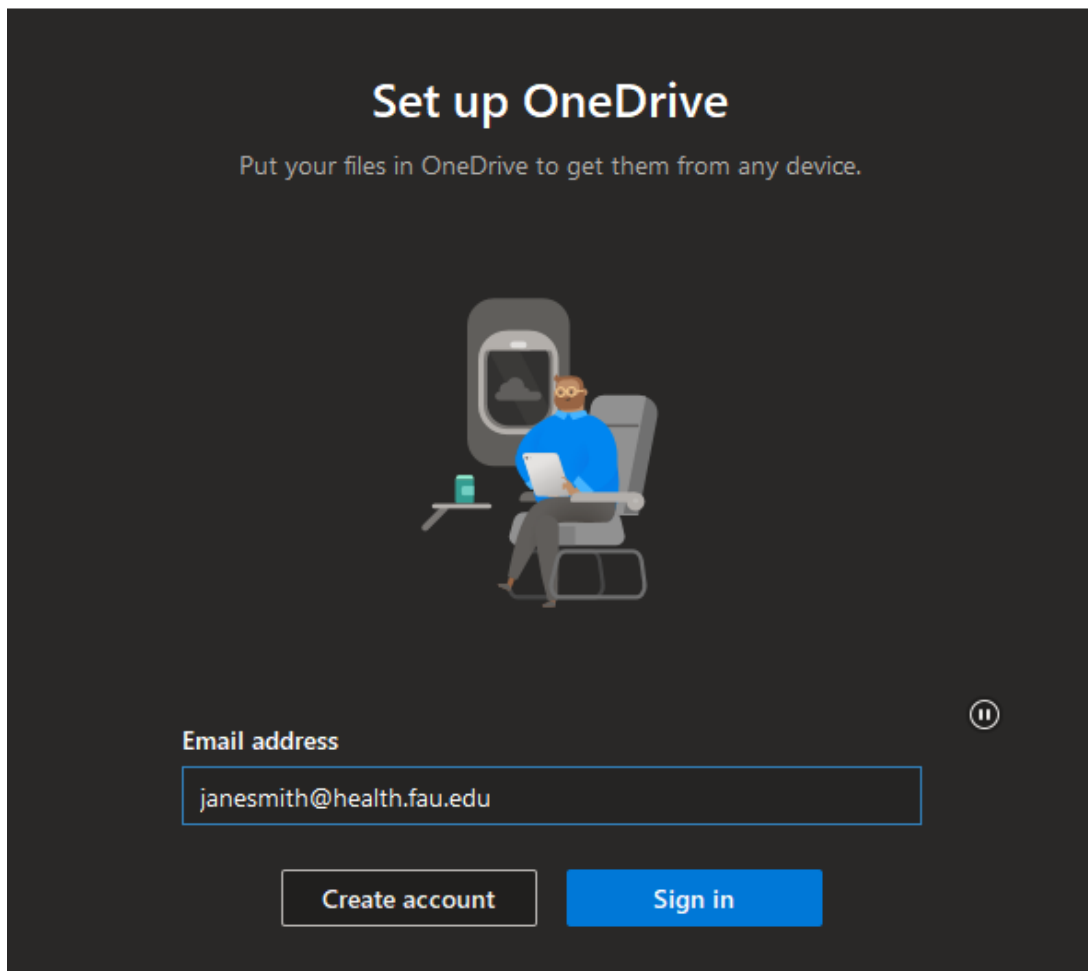
OneDrive Setup

Brian - 2022-11-29 - Office/Windows Support

Setting up OneDrive on your FAU Workstation PC or Laptop:

- Open the OneDrive app on your computer from the Start Menu.
- Enter your full FAU email address and click Sign In. You will be prompted for SSO authentication.

Microsoft OneDrive



- Follow the prompts to finalize the setup; once finished the new OneDrive folder will open automatically.