



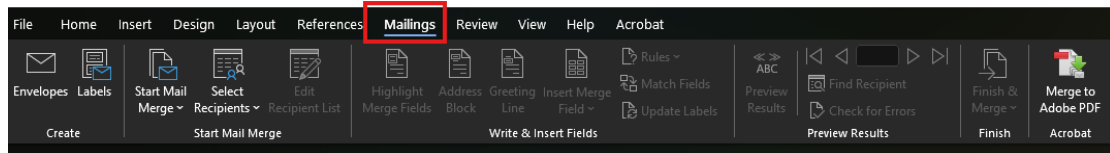
[Knowledgebase](#) > [Desktop Computing and Printing](#) > [Printing Envelopes - Fixing Unusual Characters](#)

Printing Envelopes - Fixing Unusual Characters

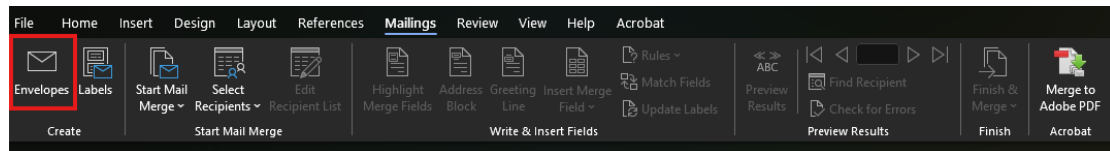
Kevin Tran - 2026-06-01 - [Desktop Computing and Printing](#)

How to Fix Characters Appearing as “?’s” in Microsoft Office Word.

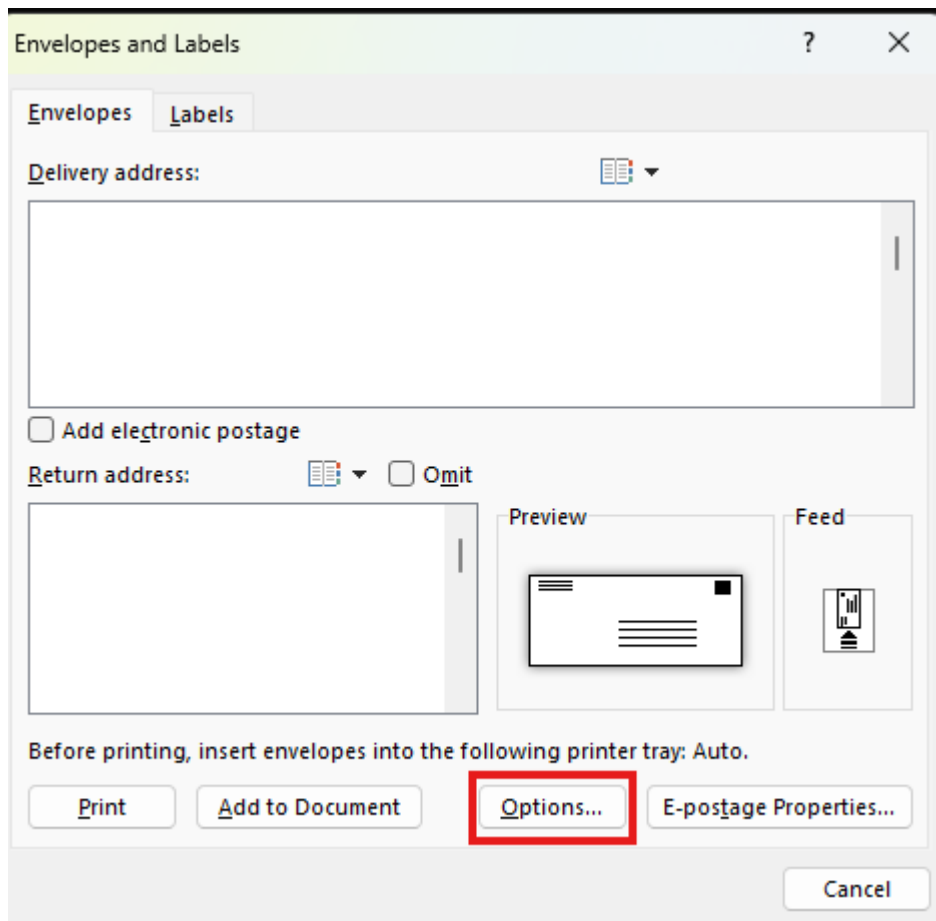
1. Open “Mailings”



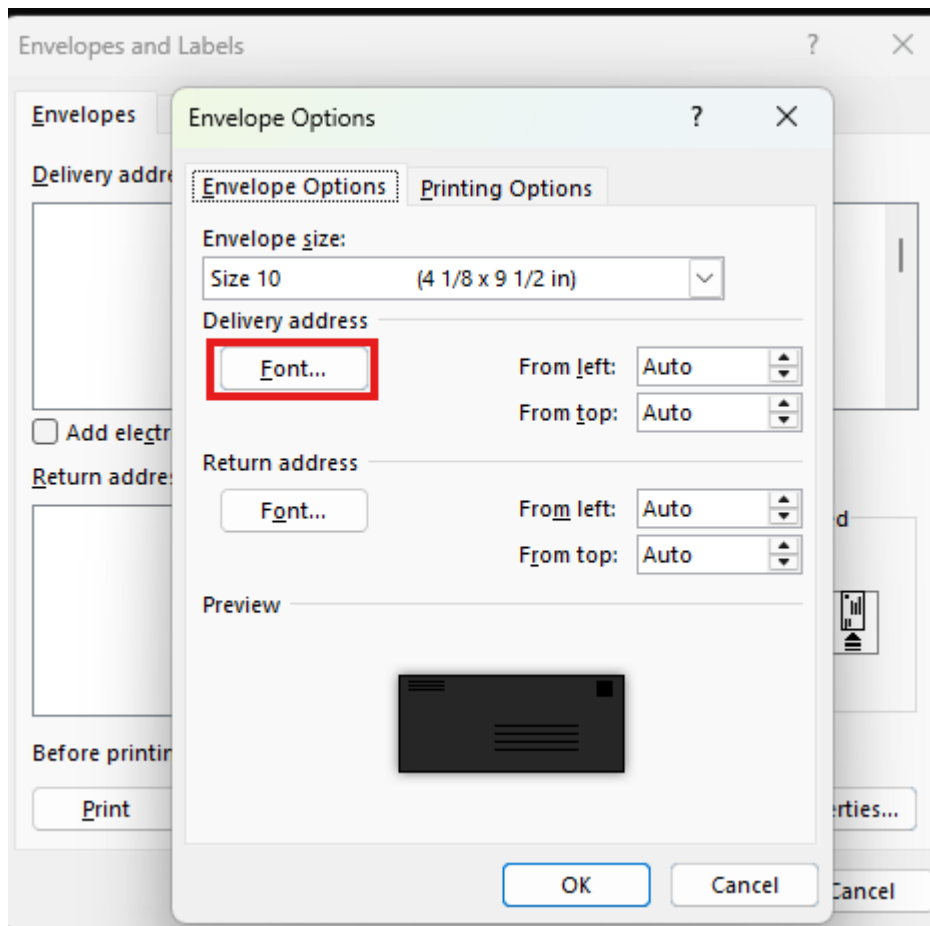
2. Press “Envelops”



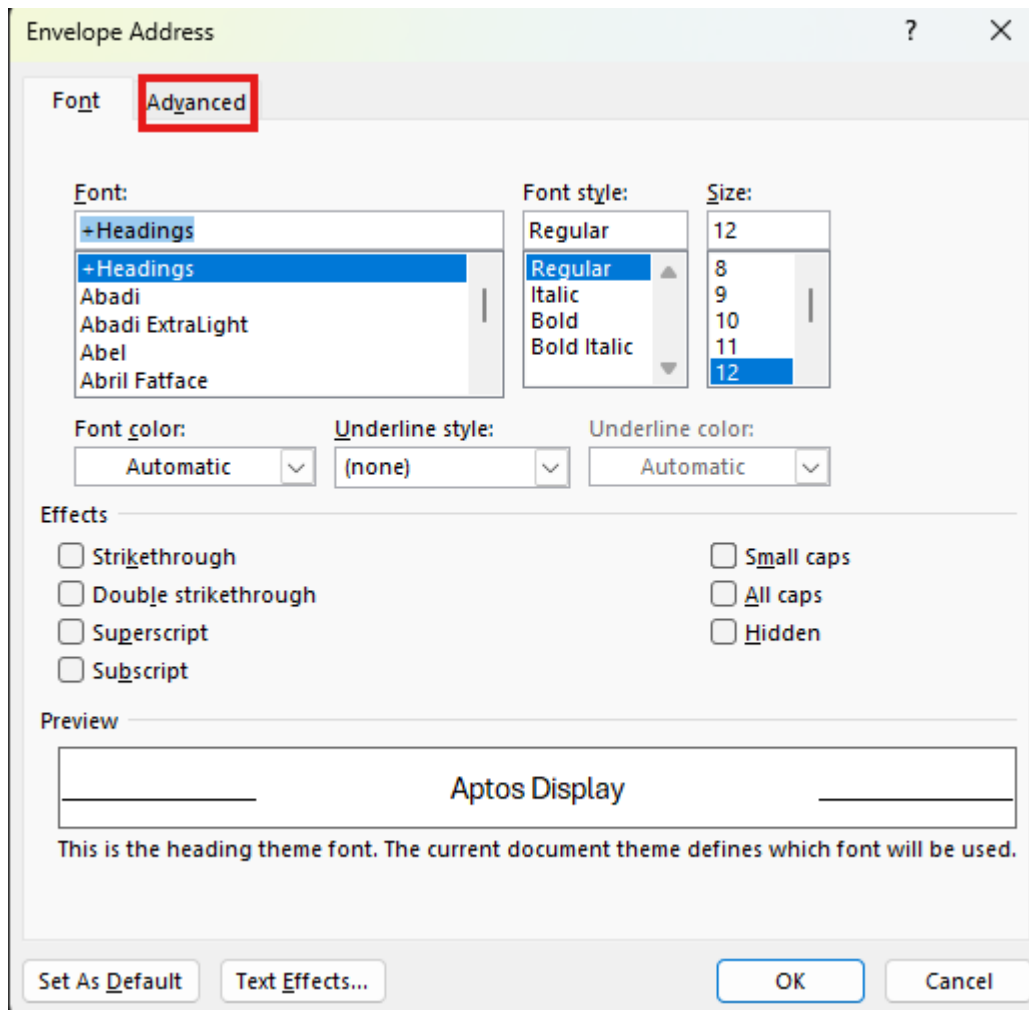
3. Press “Options”



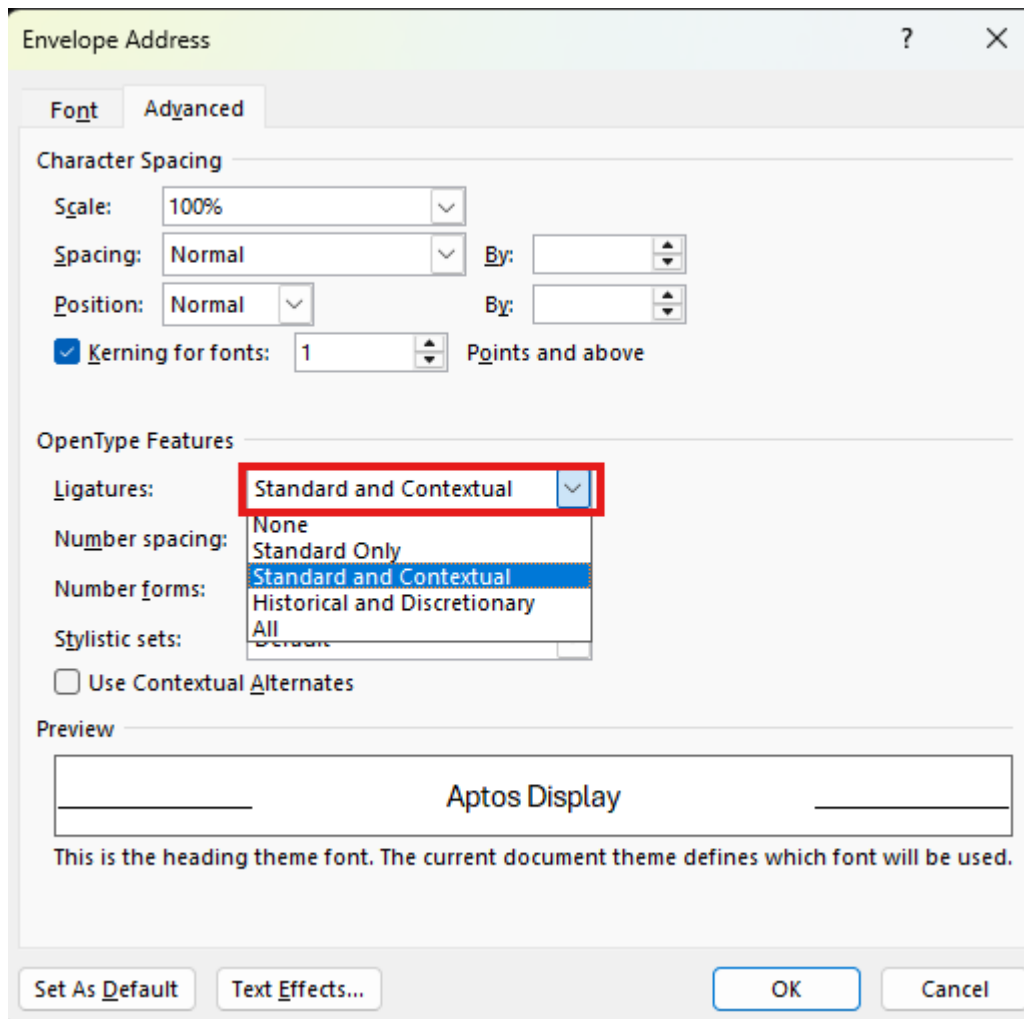
4. Select "Font" under Delivery Address



5. Select "Advanced"



6. Under Ligatures, select "Standard and Contextual" then hit "OK"



7. After selecting "OK" you are able to print envelopes without strange characters.